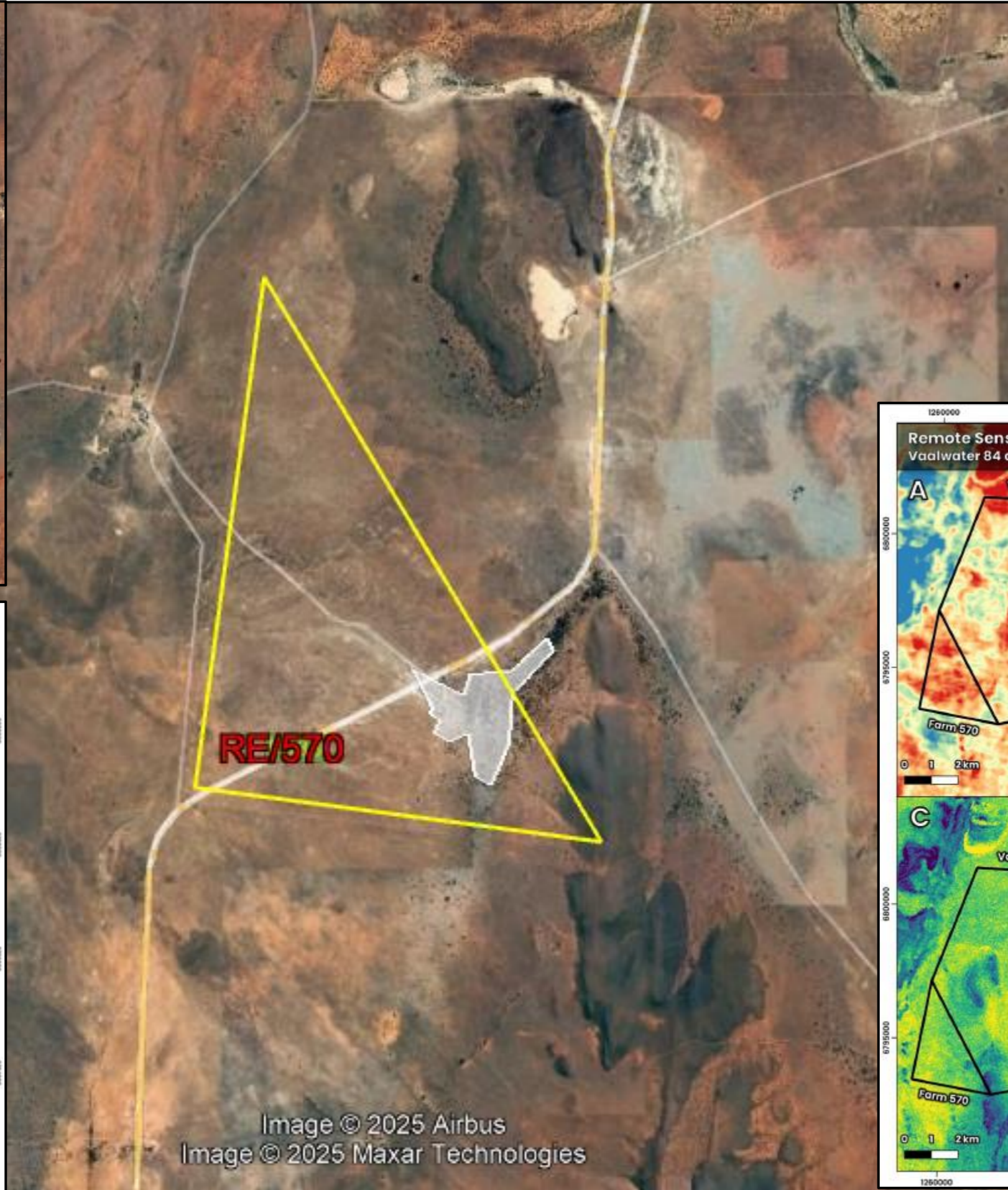


PRELIMINARY SITE PLAN FOR THE K2022641005 (SOUTH AFRICA) (PTY) LTD PROPOSED INVASIVE PROSPECTING AREAS
OVER FARM NO 570 (ZAAI PLAATS) - NC 30/5/1/1/2/14264 PR

FRESHWATER AND
TERRESTRIAL
SENSITIVITY
RESULTS



FARM NO 570 = INVASIVE PROSPECTING

SAMPLING PLAN TO BE DETERMINED AND SITE
CAMP LOCATION TO BE NEGOTIATED WITH THE
LANDOWNER/S.



REMOTE SENSING RESULTS

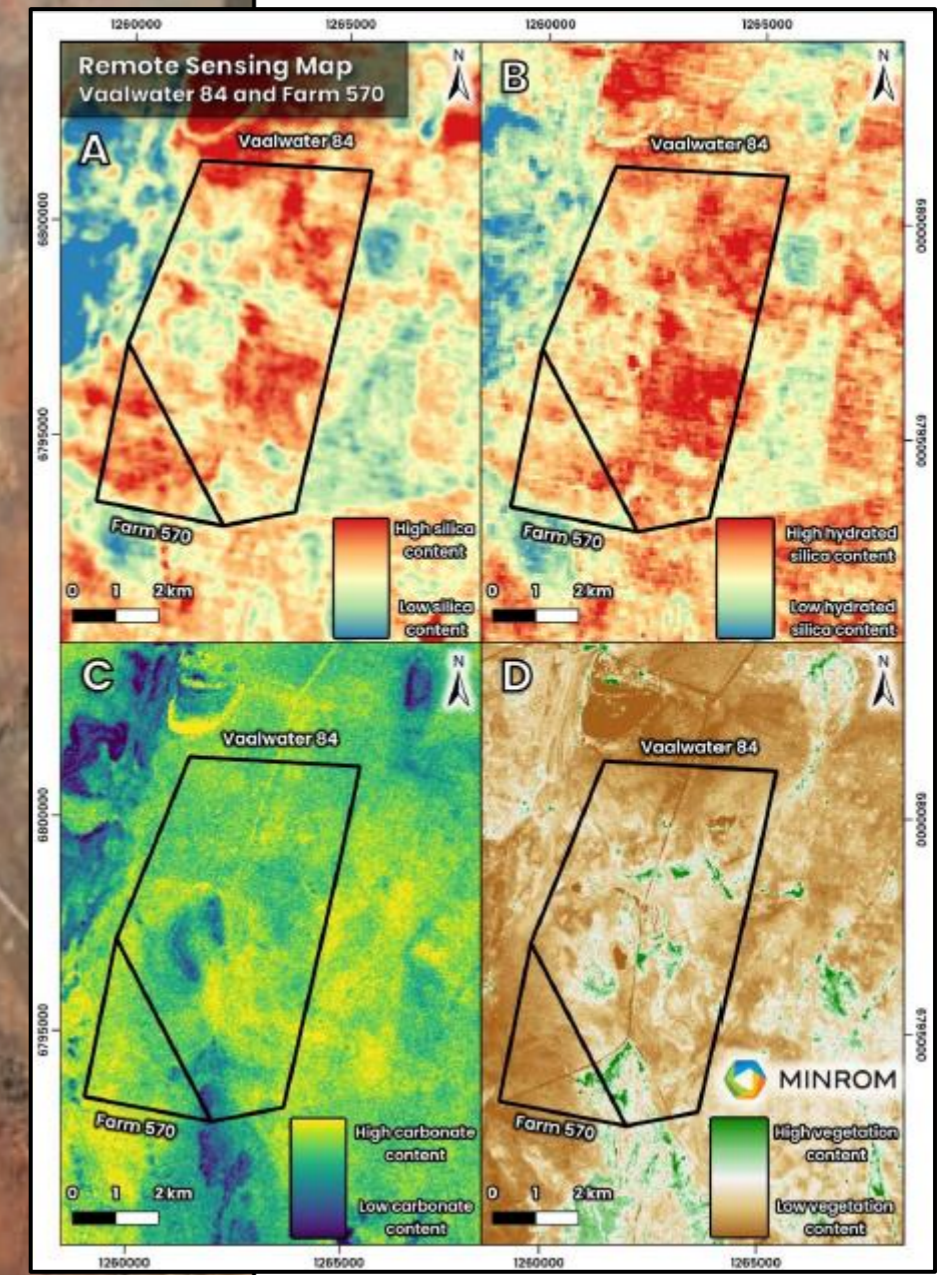
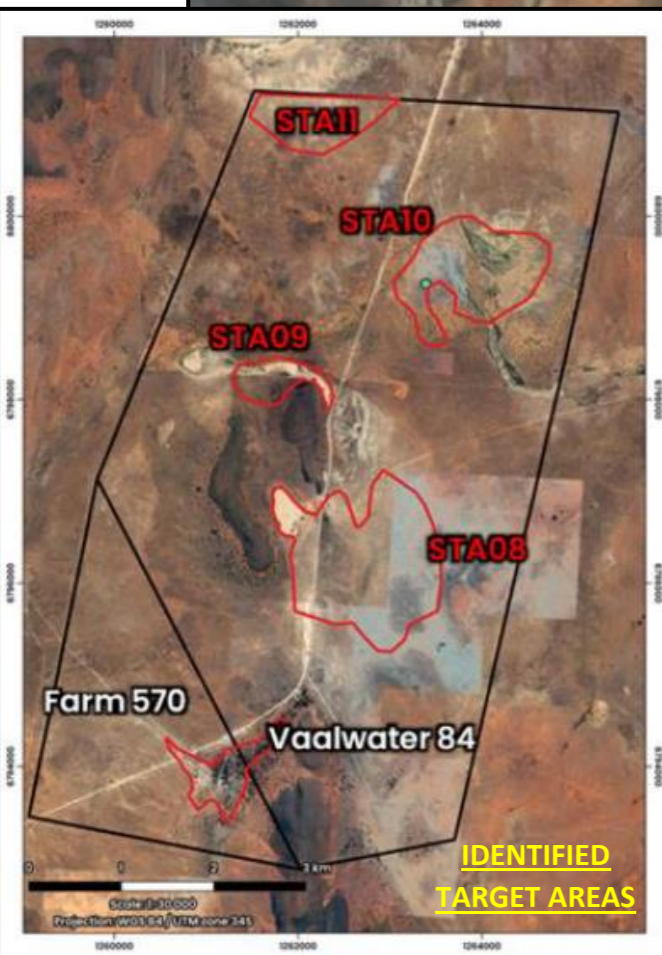


Image © 2025 Airbus
Image © 2025 Maxar Technologies